

SMD Unshielded Power Inductors

◎ Product introduction 產品介紹

- Excellent solderability and heat resistance for either flow or reflow soldering

良好的可焊性和耐焊性

- DC low resistance, small, may correspond to current use

直流電阻較低，小型，可對應大電流用途

- Magnetically shielded construction

磁屏蔽結構

- For RoHS instructions corresponding products

為RoHS指令對應產品



◎ Product application 產品應用

- Ideally used in Digital camera, notebook PC, LCD TV set, DC-DC Converters, etc

用於數碼相機，筆記本電腦，LCD電視等

◎ Product Identification 產品標識

VES 585245 470 M T

VES-----Series name 系列名稱

585245-----Dimension 產品尺寸

470-----Inductance 電感值【470=470 μ H】

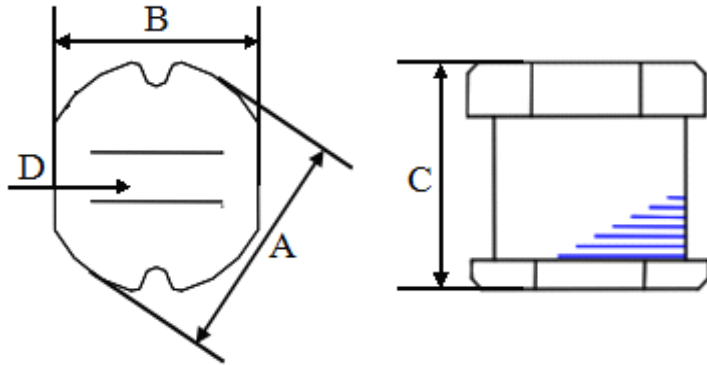
M-----Tolerance 公差【J=5%, K=10%, M= 20% ,T= 30% 】

T-----Taping 編帶盤裝

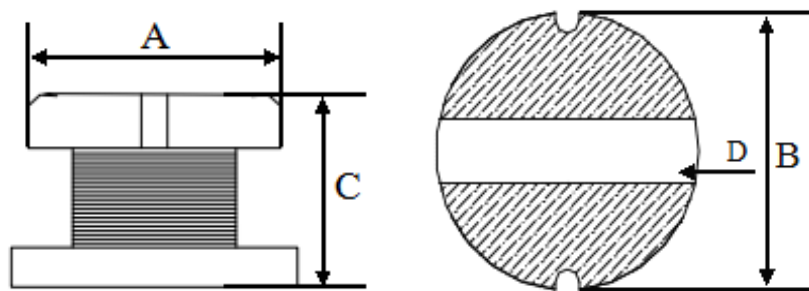
SMD Unshielded Power Inductors

◎Shape&Dimensions 形狀與尺寸:

333015--109065L



131370L



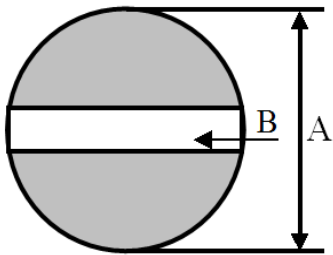
SIZE CODE (inch)	A	B	C	D	CHIPS REEL
333015	3.30±0.30	3.00±0.30	1.50±0.30	1.0 typ.	3K
333021	3.30±0.30	3.00±0.30	2.10±0.30	1.0 typ.	3K
454032	4.50±0.30	4.00±0.23	3.20±0.30	1.2	2K
585225	5.80±0.30	5.20±0.20	2.50±0.30	2.0 typ.	2K
585230	5.80±0.30	5.20±0.20	3.00±0.30	2.0 typ.	2K
585245	5.80±0.30	5.20±0.20	4.50±0.40	1.3	1.5K
787035	7.80±0.30	7.00±0.20	3.50±0.30	2.1	1K
787050	7.80±0.30	7.00±0.20	5.00±0.30	2.1	0.7K
109040L	10.00±0.30	9.00±0.30	4.00±0.50	2.1	0.7K
109054L	10.00±0.40	9.00±0.40	5.40±0.40	2.1	0.7K
109065L	10.00±0.40	9.00±0.40	6.50±0.40	2.1	0.5K
131370L	13.00±0.50	13.00±0.50	7.00±0.30	5 Typ.	0.5K

SMD Unshielded Power Inductors

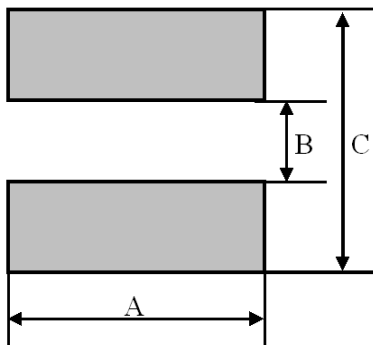
◎Recommender Land Pattern 推薦焊盤布局：

UNIT: mm

333015--109065L



131370L



SIZE CODE (inch)	A	B	C
333015	4.5	1	
333021	4.5	1	
454032	5.5	1.2	
585225	6.8	2	
585230	6.8	2	
585245	6.8	1.3	
787035	8.8	2.1	
787050	8.8	2.1	
109040L	11	2.1	
109054L	11	2.1	
109065L	11	2.1	
131370L	14	4.5	14

SMD Unshielded Power Inductors

© Detailed specifications and parameters are introduced

詳細規格及參數介紹

ORDERING CORE	Inductance (μ H)	Tolerance (\pm %)	Test Frequency	RDC (MAX) (Ω)	Isat (A)
VES-585245-1R8	1.8	M	7.96MHz/1V	0.0200	3.50
VES-585245-2R2	2.2	M	7.96MHz/1V	0.0230	3.20
VES-585245-3R3	3.3	K/M	7.96MHz/1V	0.0314	2.59
VES-585245-3R5	3.5	M	7.96MHz/1V	0.0300	2.40
VES-585245-4R7	4.7	K/M	7.96MHz/1V	0.0372	2.30
VES-585245-6R8	6.8	M	7.96MHz/1V	0.0570	1.80
VES-585245-8R2	8.2	M	7.96MHz/1V	0.0594	1.70
VES-585245-100	10	K/M	2.52MHz/1V	0.1000	1.44
VES-585245-120	12	M	2.52MHz/1V	0.1200	1.40
VES-585245-150	15	K/M	2.52MHz/1V	0.1400	1.30
VES-585245-180	18	M	2.52MHz/1V	0.1500	1.23
VES-585245-220	22	M	2.52MHz/1V	0.1800	1.11
VES-585245-270	27	M	2.52MHz/1V	0.2000	0.97
VES-585245-330	33	K/M	2.52MHz/1V	0.2300	0.88
VES-585245-390	39	K/M	2.52MHz/1V	0.3200	0.80
VES-585245-470	47	K/M	2.52MHz/1V	0.3700	0.72
VES-585245-560	56	K/M	2.52MHz/1V	0.4200	0.68
VES-585245-680	68	K/M	2.52MHz/1V	0.4600	0.61
VES-585245-820	82	K/M	2.52MHz/1V	0.6000	0.58
VES-585245-101	100	K/M	1KHz/1V	0.7000	0.52
VES-585245-121	120	K/M	1KHz/1V	0.9300	0.48
VES-585245-151	150	K/M	1KHz/1V	1.1000	0.40
VES-585245-181	180	K/M	1KHz/1V	1.3800	0.38
VES-585245-221	220	K/M	1KHz/1V	1.5700	0.35
VES-585245-271	270	K/M	1KHz/1V	1.8500	0.29
VES-585245-331	330	K/M	1KHz/1V	2.0000	0.28
VES-585245-391	390	K/M	1KHz/1V	2.6000	0.26
VES-585245-471	470	K/M	1KHz/1V	3.0000	0.12
VES-585245-561	560	K/M	1KHz/1V	4.1900	0.10
VES-585245-681	680	K/M	1KHz/1V	4.4400	0.08
VES-585245-821	820	K/M	1KHz/1V	5.1200	0.05

SMD Unshielded Power Inductors

◎ Detailed specifications and parameters are introduced

詳細規格及參數介紹

ORDERING CORE	Inductance (μH)	Tolerance ($\pm\%$)	Test Frequency	RDC (MAX) (Ω)	Isat (A)
VES-585245-102	1000	K/M	1KHz/1V	10.0000	0.03