

SMD Unshielded Power Inductors

◎ Product introduction 產品介紹

- Excellent solderability and heat resistance for either flow or reflow soldering

良好的可焊性和耐焊性

- DC low resistance, small, may correspond to current use

直流電阻較低，小型，可對應大電流用途

- Magnetically shielded construction

磁屏蔽結構

- For RoHS instructions corresponding products

為RoHS指令對應產品



◎ Product application 產品應用

- Ideally used in Digital camera, notebook PC, LCD TV set, DC-DC Converters, etc

用於數碼相機，筆記本電腦，LCD電視等

◎ Product Identification 產品標識

VES 109054L 470 M T

VES-----Series name 系列名稱

109054L-----Dimension 產品尺寸

470-----Inductance 電感值【470=470 μ H】

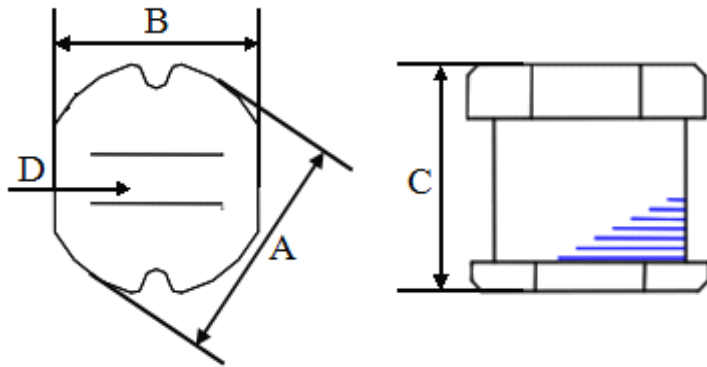
M-----Tolerance 公差【J=5%, K=10%, M= 20% ,T= 30% 】

T-----Taping 編帶盤裝

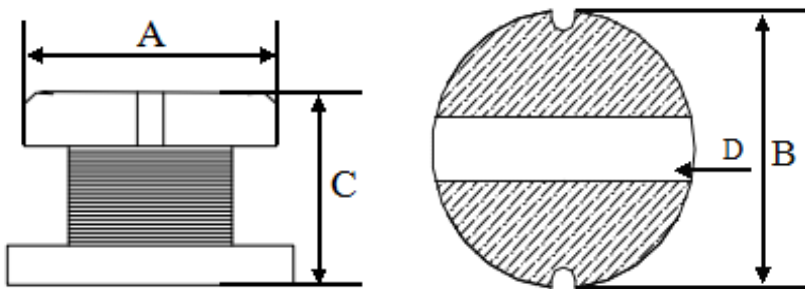
SMD Unshielded Power Inductors

◎Shape&Dimensions 形狀與尺寸:

333015--109065L



131370L



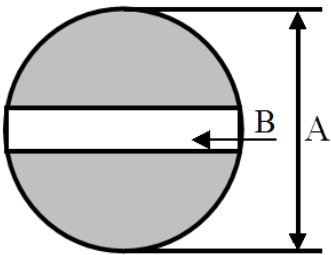
SIZE CODE (inch)	A	B	C	D	CHIPS REEL
333015	3.30±0.30	3.00±0.30	1.50±0.30	1.0 typ.	3K
333021	3.30±0.30	3.00±0.30	2.10±0.30	1.0 typ.	3K
454032	4.50±0.30	4.00±0.23	3.20±0.30	1.2	2K
585225	5.80±0.30	5.20±0.20	2.50±0.30	2.0 typ.	2K
585230	5.80±0.30	5.20±0.20	3.00±0.30	2.0 typ.	2K
585245	5.80±0.30	5.20±0.20	4.50±0.40	1.3	1.5K
787035	7.80±0.30	7.00±0.20	3.50±0.30	2.1	1K
787050	7.80±0.30	7.00±0.20	5.00±0.30	2.1	0.7K
109040L	10.00±0.30	9.00±0.30	4.00±0.50	2.1	0.7K
109054L	10.00±0.40	9.00±0.40	5.40±0.40	2.1	0.7K
109065L	10.00±0.40	9.00±0.40	6.50±0.40	2.1	0.5K
131370L	13.00±0.50	13.00±0.50	7.00±0.30	5 Typ.	0.5K

SMD Unshielded Power Inductors

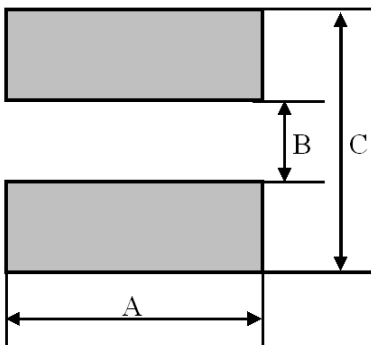
◎Recommender Land Pattern 推薦焊盤布局:

UNIT: mm

333015--109065L



131370L



SIZE CODE (inch)	A	B	C
333015	4.5	1	
333021	4.5	1	
454032	5.5	1.2	
585225	6.8	2	
585230	6.8	2	
585245	6.8	1.3	
787035	8.8	2.1	
787050	8.8	2.1	
109040L	11	2.1	
109054L	11	2.1	
109065L	11	2.1	
131370L	14	4.5	14

SMD Unshielded Power Inductors

© Detailed specifications and parameters are introduced

詳細規格及參數介紹

ORDERING CORE	Inductance (μH)	Tolerance ($\pm\%$)	Test Frequency	RDC (MAX) (Ω)	Isat (A)
VES-109054L-3R3	3.3	M	7.96MHz/1V	0.038	2.80
VES-109054L-4R7	4.7	M	7.96MHz/1V	0.040	2.60
VES-109054L-5R6	5.6	M	7.96MHz/1V	0.037	4.50
VES-109054L-6R8	6.8	M	7.96MHz/1V	0.037	4.33
VES-109054L-8R2	8.2	M	7.96MHz/1V	0.050	3.50
VES-109054L-100	10	K/M	2.52MHz/1V	0.060	2.60
VES-109054L-120	12	M	2.52MHz/1V	0.070	2.45
VES-109054L-150	15	K/M	2.52MHz/1V	0.080	2.27
VES-109054L-180	18	M	2.52MHz/1V	0.090	2.15
VES-109054L-220	22	K/M	2.52MHz/1V	0.100	1.95
VES-109054L-270	27	M	2.52MHz/1V	0.110	1.76
VES-109054L-330	33	K/M	2.52MHz/1V	0.120	1.50
VES-109054L-390	39	K/M	2.52MHz/1V	0.140	1.37
VES-109054L-470	47	K/M	2.52MHz/1V	0.170	1.28
VES-109054L-560	56	K/M	2.52MHz/1V	0.190	1.17
VES-109054L-680	68	K/M	2.52MHz/1V	0.220	1.11
VES-109054L-820	82	K/M	2.52MHz/1V	0.250	1.00
VES-109054L-101	100	K/M	1KHz/1V	0.350	0.97
VES-109054L-121	120	K/M	1KHz/1V	0.400	0.89
VES-109054L-151	150	K/M	1KHz/1V	0.470	0.78
VES-109054L-181	180	K/M	1KHz/1V	0.630	0.72
VES-109054L-221	220	K/M	1KHz/1V	0.730	0.66
VES-109054L-271	270	K/M	1KHz/1V	0.970	0.57
VES-109054L-331	330	K/M	1KHz/1V	1.150	0.52
VES-109054L-391	390	K/M	1KHz/1V	1.300	0.48
VES-109054L-471	470	K/M	1KHz/1V	1.480	0.42
VES-109054L-561	560	K/M	1KHz/1V	1.900	0.33
VES-109054L-681	680	K/M	1KHz/1V	2.250	0.28
VES-109054L-821	820	K/M	1KHz/1V	2.550	0.24
VES-109054L-102	1000	K/M	1KHz/1V	3.100	0.20