

SMD Unshielded Power Inductors

◎ Product introduction 產品介紹

- Excellent solderability and heat resistance for either flow or reflow soldering

良好的可焊性和耐焊性

- DC low resistance, small, may correspond to current use

直流電阻較低，小型，可對應大電流用途

- Magnetically shielded construction

磁屏蔽結構

- For RoHS instructions corresponding products

為RoHS指令對應產品



◎ Product application 產品應用

- Ideally used in Digital camera, notebook PC, LCD TV set, DC-DC Converters, etc

用於數碼相機，筆記本電腦，LCD電視等

◎ Product Identification 產品標識

VES 109040L 470 M T

VES-----Series name 系列名稱

109040L-----Dimension 產品尺寸

470-----Inductance 電感值【470=470 μ H】

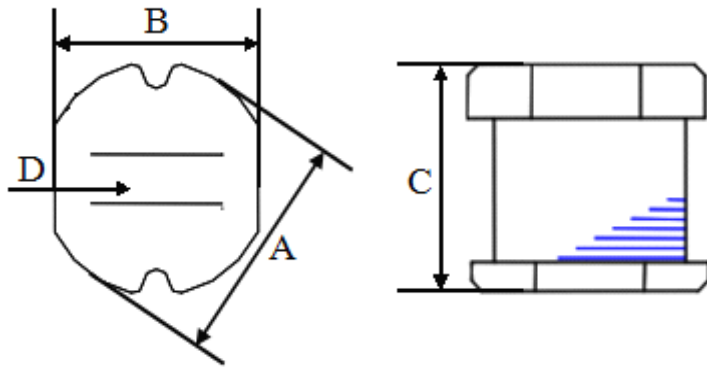
M-----Tolerance 公差【J=5%, K=10%, M= 20% ,T= 30% 】

T-----Taping 編帶盤裝

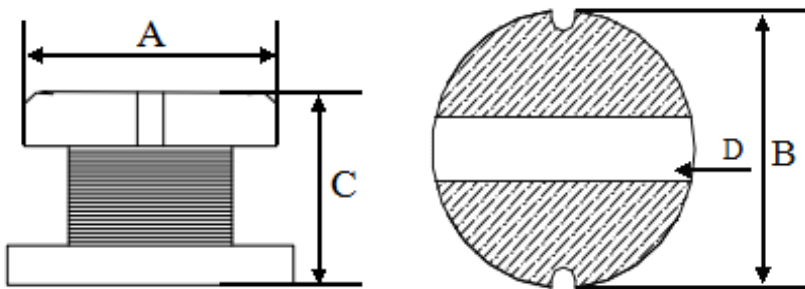
SMD Unshielded Power Inductors

◎Shape&Dimensions 形狀與尺寸:

333015--109065L



131370L



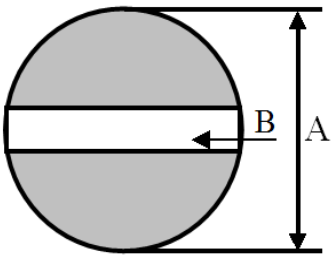
SIZE CODE (inch)	A	B	C	D	CHIPS REEL
333015	3.30±0.30	3.00±0.30	1.50±0.30	1.0 typ.	3K
333021	3.30±0.30	3.00±0.30	2.10±0.30	1.0 typ.	3K
454032	4.50±0.30	4.00±0.23	3.20±0.30	1.2	2K
585225	5.80±0.30	5.20±0.20	2.50±0.30	2.0 typ.	2K
585230	5.80±0.30	5.20±0.20	3.00±0.30	2.0 typ.	2K
585245	5.80±0.30	5.20±0.20	4.50±0.40	1.3	1.5K
787035	7.80±0.30	7.00±0.20	3.50±0.30	2.1	1K
787050	7.80±0.30	7.00±0.20	5.00±0.30	2.1	0.7K
109040L	10.00±0.30	9.00±0.30	4.00±0.50	2.1	0.7K
109054L	10.00±0.40	9.00±0.40	5.40±0.40	2.1	0.7K
109065L	10.00±0.40	9.00±0.40	6.50±0.40	2.1	0.5K
131370L	13.00±0.50	13.00±0.50	7.00±0.30	5 Typ.	0.5K

SMD Unshielded Power Inductors

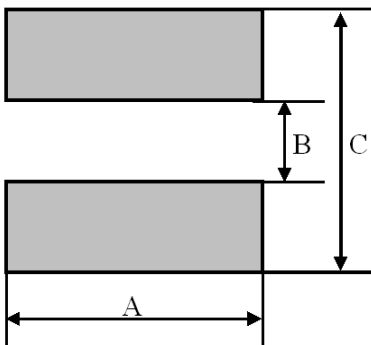
◎Recommender Land Pattern 推薦焊盤布局：

UNIT: mm

333015--109065L



131370L



SIZE CODE (inch)	A	B	C
333015	4.5	1	
333021	4.5	1	
454032	5.5	1.2	
585225	6.8	2	
585230	6.8	2	
585245	6.8	1.3	
787035	8.8	2.1	
787050	8.8	2.1	
109040L	11	2.1	
109054L	11	2.1	
109065L	11	2.1	
131370L	14	4.5	14

SMD Unshielded Power Inductors

◎ Detailed specifications and parameters are introduced

詳細規格及參數介紹

ORDERING CORE	Inductance (μ H)	Tolerance (\pm %)	Test Frequency	RDC (MAX) (Ω)	Isat (A)
VES-109040L-3R8	3.8	M	7.96MHz/1V	0.022	4.20
VES-109040L-100	10	M	2.52MHz/1V	0.050	2.38
VES-109040L-120	12	M	2.52MHz/1V	0.060	2.13
VES-109040L-150	15	K/M	2.52MHz/1V	0.070	1.87
VES-109040L-180	18	M	2.52MHz/1V	0.080	1.73
VES-109040L-220	22	K/M	2.52MHz/1V	0.090	1.60
VES-109040L-270	27	M	2.52MHz/1V	0.100	1.44
VES-109040L-330	33	K/M	2.52MHz/1V	0.120	1.26
VES-109040L-390	39	K/M	2.52MHz/1V	0.150	1.20
VES-109040L-470	47	K/M	2.52MHz/1V	0.170	1.10
VES-109040L-560	56	K/M	2.52MHz/1V	0.200	1.01
VES-109040L-680	68	K/M	2.52MHz/1V	0.220	0.91
VES-109040L-820	82	K/M	2.52MHz/1V	0.300	0.85
VES-109040L-101	100	K/M	1KHz/1V	0.340	0.74
VES-109040L-121	120	K/M	1KHz/1V	0.400	0.69
VES-109040L-151	150	K/M	1KHz/1V	0.540	0.61
VES-109040L-181	180	K/M	1KHz/1V	0.620	0.56
VES-109040L-221	220	K/M	1KHz/1V	0.720	0.53
VES-109040L-271	270	K/M	1KHz/1V	0.950	0.45
VES-109040L-331	330	K/M	1KHz/1V	1.100	0.42
VES-109040L-391	390	K/M	1KHz/1V	1.240	0.38
VES-109040L-471	470	K/M	1KHz/1V	1.530	0.35
VES-109040L-561	560	K/M	1KHz/1V	1.900	0.32